

iPrint3d

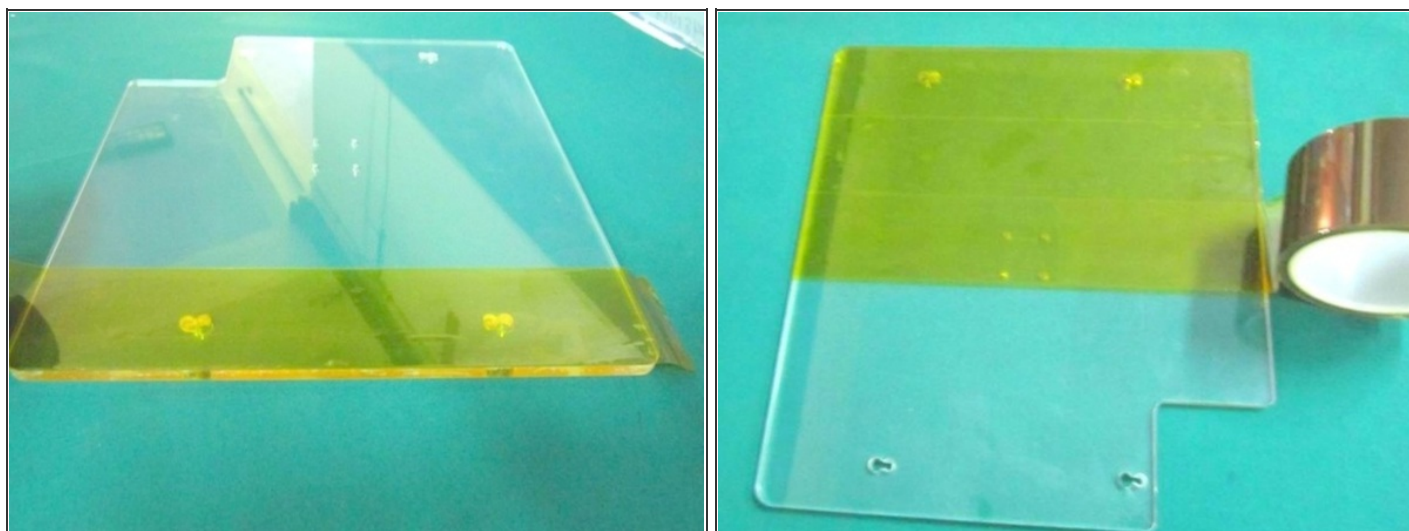
Fixing Kapton tape

Written By: Kerry

SUMMARY

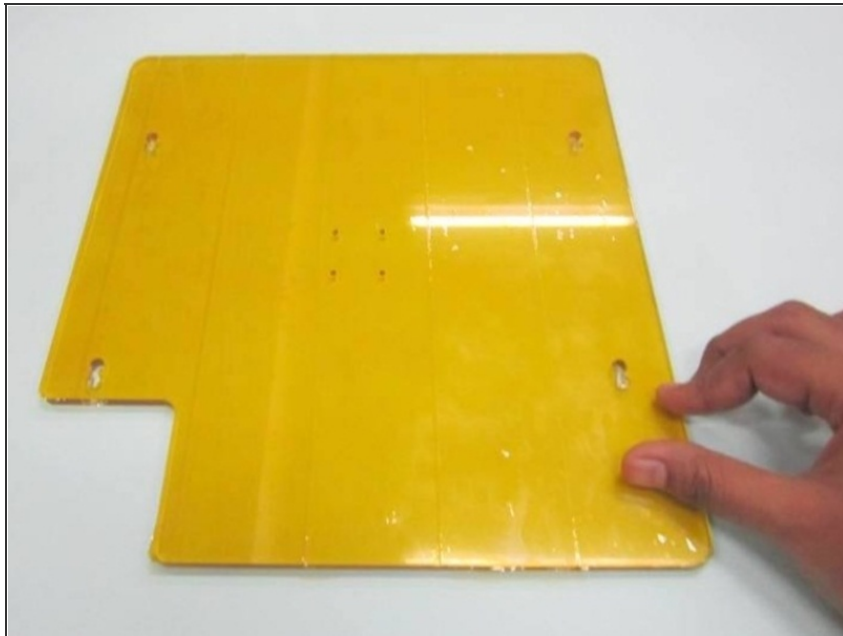
Kapton tape seems to be great surface material for PLA / ABS plastic. It is useful as a build surface as hot, extruded plastic adheres to it easily and cooled parts can be peeled off of the tape without damaging the part or the kapton tape.

Step 1 — Fixing Kapton tape



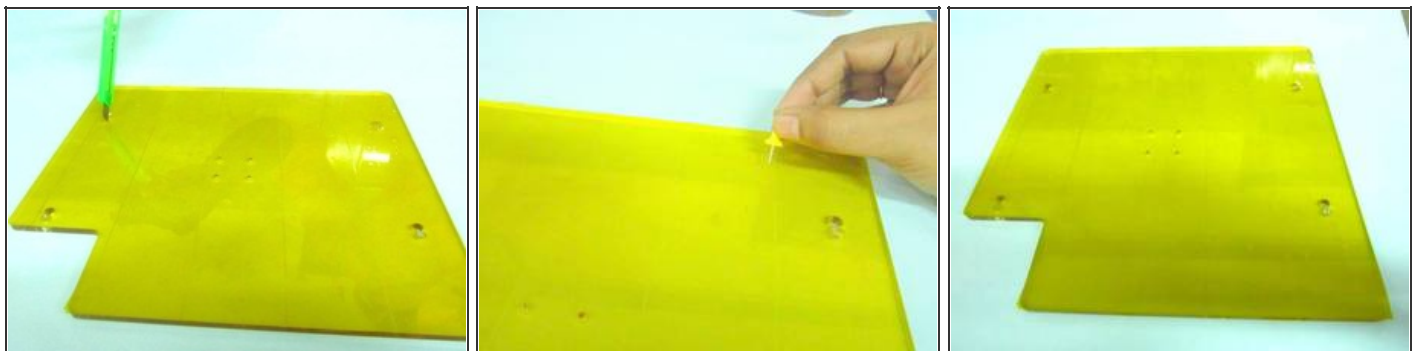
- Take Print plate and apply kapton tape one side of print plate only.
- : Avoid air bubbles under tape

Step 2



- Use fingers and press tape against print plate. We do it to avoid air bubbles in between kapton tape and print plate.

Step 3



- Finish of edges with your fingers and use knife to cut off the holes, where screws to be fitted."
- Air bubbles are not big issue; we need to make sure they are not very large. Take a pin and slit it and work it out with your fingers.

This document was last generated on 2012-09-25 03:55:18 AM.