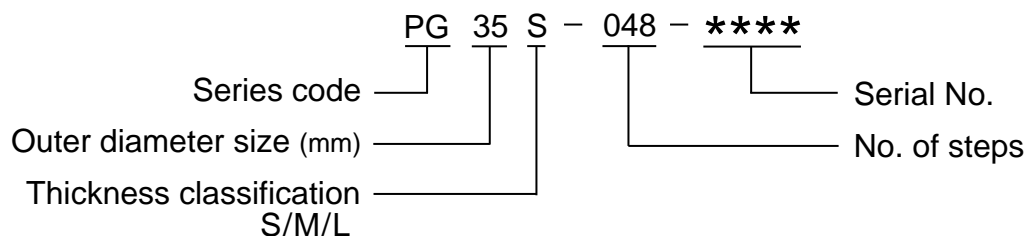




■ Product Line Up

Product Name	Step No.	Outer Diameter [mm]	Length [mm]
PG15S-020	20	15	22.5
PG20S-020	20	20	27.5
PG20L-020	20	20	31.5
PG25S-048	48	25	24.5
PG25L-024	24	25	29.0
PG35S-048	48	35	38.5
PG35L-048	48	35	45.0

■ Example of Product Number Explanation




 PM Motor
 PG Type

Applications

Home electric appliances : Air-conditioners

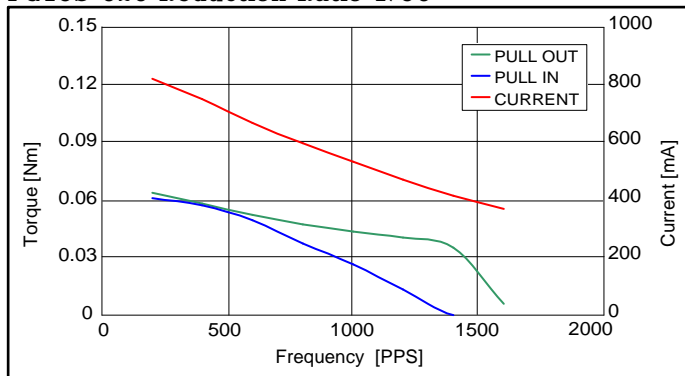
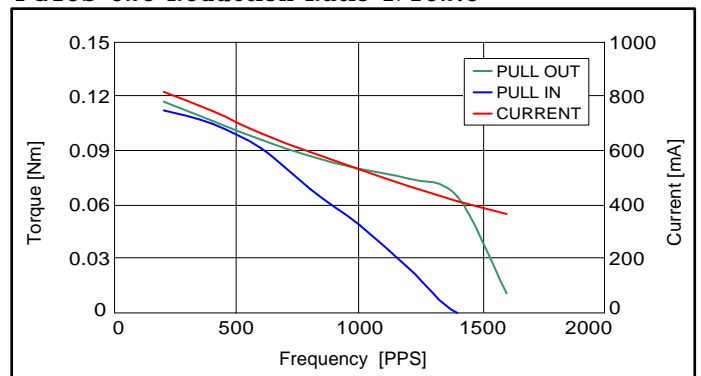
OA Equipment : Printers / Photocopiers

Power Tools : Drills / Drivers

Reference Characteristics

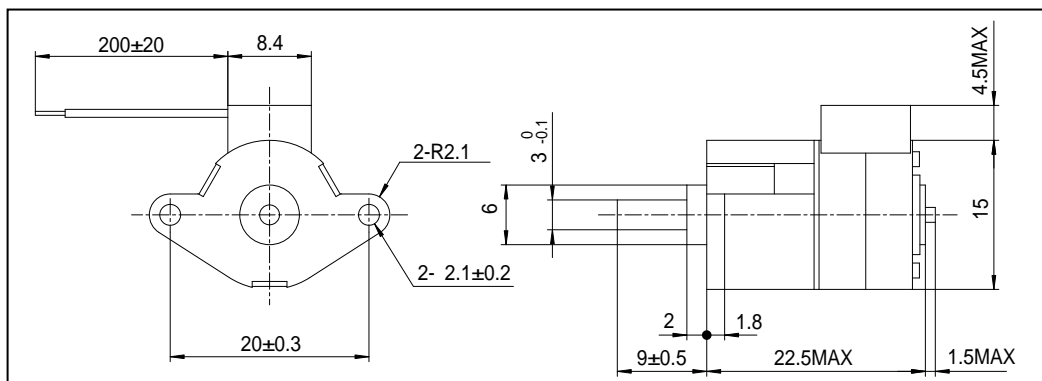
Motor Size	PG15S-020	
Reduction Ratio	1/50	1/102.5
Drive Characteristics	BIPOLAR CONST. VOLT.	
Drive Voltage	5[V]	
Drive Method	2-2 PHASE	
Step Angle (2phase drive)	0.36°	0.175°
DC Resistance	10[Ω]	
Insulation Resistance	100M[Ω] MIN	
Dielectric Strength	AC 500[V] 1[min]	
Class of Insulation	CLASS B	
Operating Temp.	-10[°C] ~ 50[°C]	
Storage Temp.	-30[°C] ~ 80[°C]	
Operating Hum.	20[%] RH ~ 90[%] RH	

Torque Characteristics

PG15S-020 Reduction Ratio 1/50

PG15S-020 Reduction Ratio 1/102.5


These torque values are reference only. Heat radiation conditions and temperature rise effect by duty are different on each equipment, therefore please select motors after considering the heat conditions in the actual equipment.

Dimensions



The dimensions shown are for reference purpose and can be modified to your requirements. Contact our Engineering Department for details.



PM Motor
PG Type

Applications

Home electric appliances : Air-conditioners

OA Equipment : Printers / Photocopiers

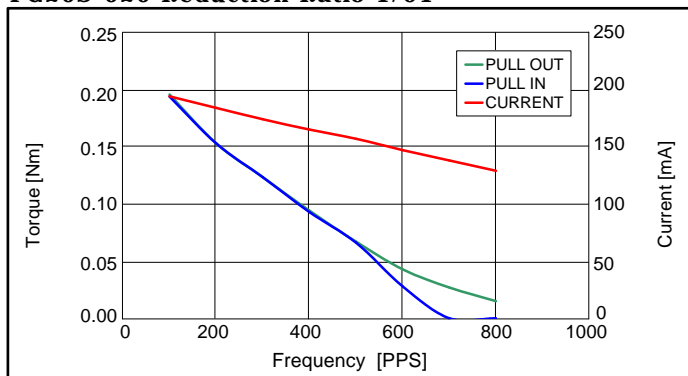
Power Tools : Drills / Drivers

Reference Characteristics

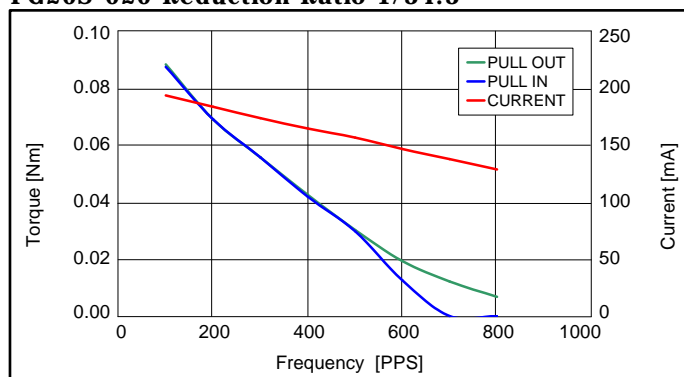
Motor Size	PG20S-020		
Reduction Ratio	1/34.3	1/91	1/185.4
Drive Characteristics	BIPOLAR CONST. VOLT.		
Drive Voltage	12[V]		
Drive Method	2-2 PHASE		
Step Angle (2phase drive)	0.524°	0.197°	0.097°
DC Resistance	120[Ω]		
Insulation Resistance	100M[Ω] MIN		
Dielectric Strength	AC 500[V] 1[min]		
Class of Insulation	CLASS B		
Operating Temp.	-10[°C] ~ 50[°C]		
Storage Temp.	-30[°C] ~ 80[°C]		
Operating Hum.	20[%] RH ~ 90[%] RH		

Torque Characteristics

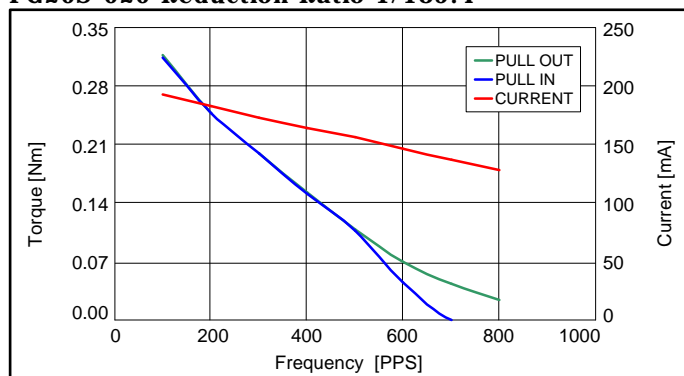
PG20S-020 Reduction Ratio 1/91



PG20S-020 Reduction Ratio 1/34.3

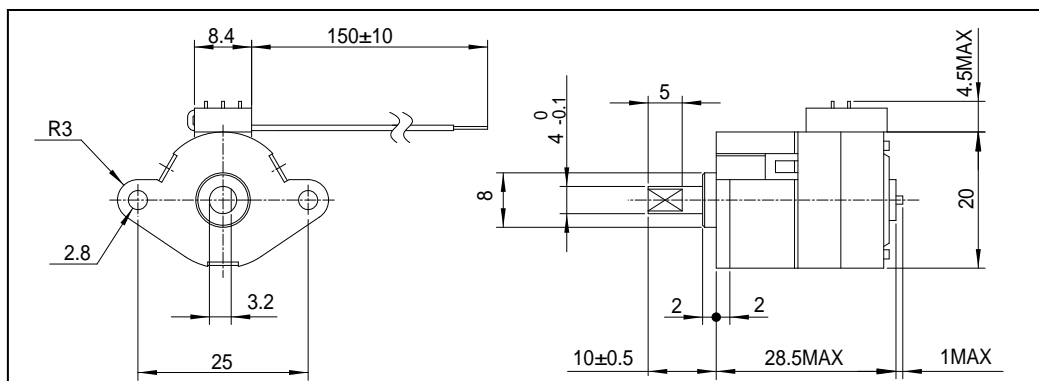


PG20S-020 Reduction Ratio 1/185.4



These torque values are reference only. Heat radiation conditions and temperature rise effect by duty are different on each equipment, therefore please select motors after considering the heat conditions in the actual equipment.

Dimensions



The dimensions shown are for reference purpose and can be modified to your requirements. Contact our Engineering Department for details.



PM Motor
PG Type

Applications

Home electric appliances : Air-conditioners

OA Equipment : Printers / Photocopiers

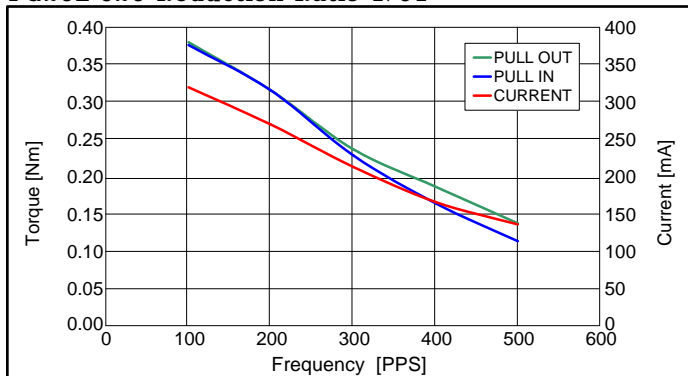
Power Tools : Drills / Drivers

Reference Characteristics

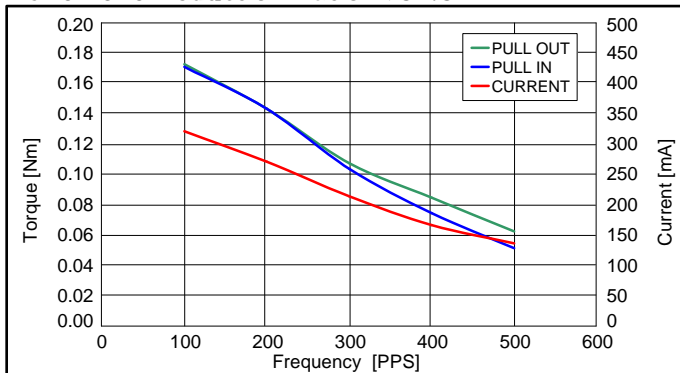
Motor Size	PG20L-020		
Reduction Ratio	1/34.3	1/91	1/185.4
Drive Characteristics	BIPOLAR CONST. VOLT.		
Drive Voltage	12[V]		
Drive Method	2-2 PHASE		
Step Angle (2phase drive)	0.524°	0.197°	0.097°
DC Resistance	80[Ω]		
Insulation Resistance	100M[Ω] MIN		
Dielectric Strength	AC 500[V] 1[min]		
Class of Insulation	CLASS B		
Operating Temp.	-10[°C] ~ 50[°C]		
Storage Temp.	-30[°C] ~ 80[°C]		
Operating Hum.	20[%] RH ~ 90[%] RH		

Torque Characteristics

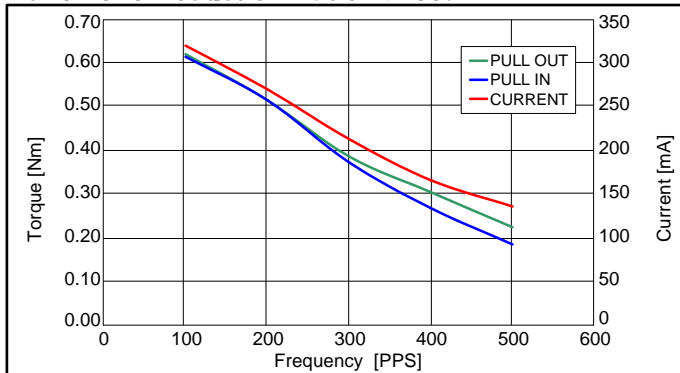
PG20L-020 Reduction Ratio 1/91



PG20L-020 Reduction Ratio 1/34.3

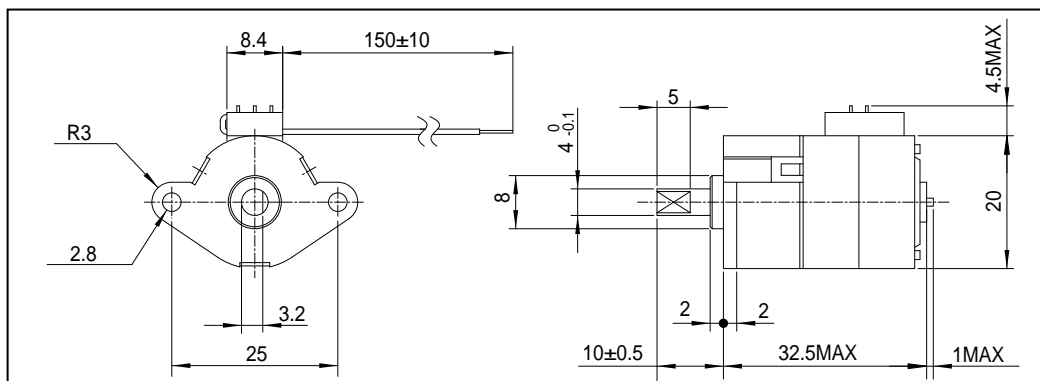


PG20L-020 Reduction Ratio 1/185.4

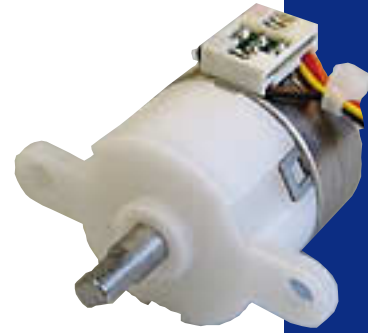


These torque values are reference only. Heat radiation conditions and temperature rise effect by duty are different on each equipment, therefore please select motors after considering the heat conditions in the actual equipment.

Dimensions



The dimensions shown are for reference purpose and can be modified to your requirements. Contact our Engineering Department for details.



PM Motor
PG Type

Applications

Home electric appliances : Air-conditioners

OA Equipment : Printers / Photocopiers

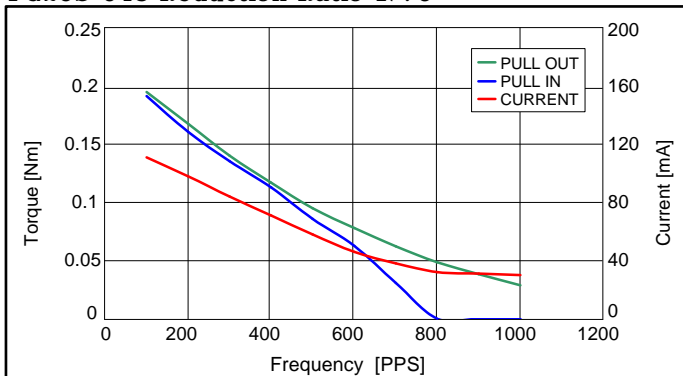
Power Tools : Drills / Drivers

Reference Characteristics

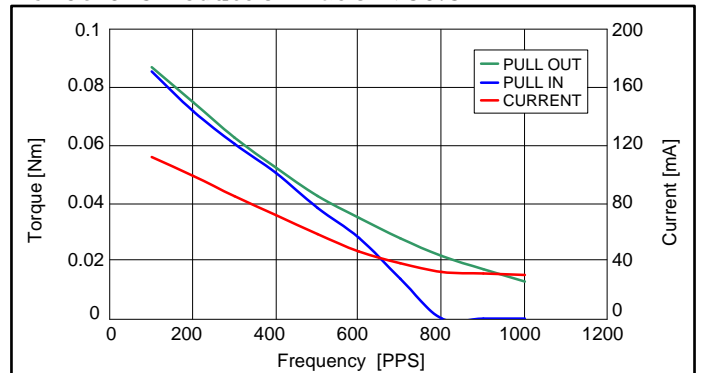
Motor Size	PG25S-048		
Reduction Ratio	1/30.3	1/76	1/236
Drive Characteristics	UNIPOLAR CONST. VOLT.		
Drive Voltage	12[V]		
Drive Method	2-2 PHASE		
Step Angle (2phase drive)	0.2475°	0.0986°	0.0317°
DC Resistance	200[Ω]		
Insulation Resistance	100M[Ω] MIN		
Dielectric Strength	AC 500[V] 1[min]		
Class of Insulation	CLASS B		
Operating Temp.	-10[°C] ~ 50[°C]		
Storage Temp.	-30[°C] ~ 80[°C]		
Operating Hum.	20[%] RH ~ 90[%] RH		

Torque Characteristics

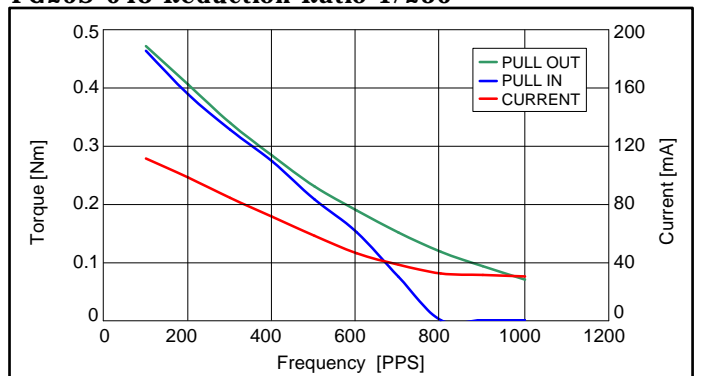
PG25S-048 Reduction Ratio 1/76



PG25S-048 Reduction Ratio 1/30.3

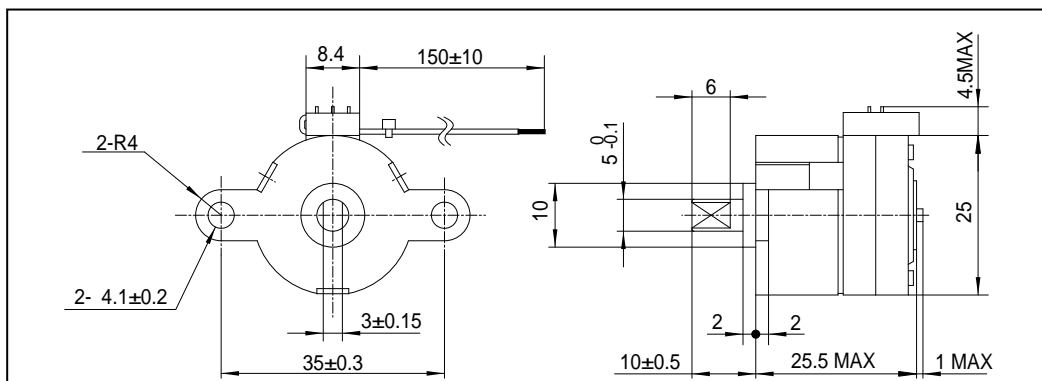


PG25S-048 Reduction Ratio 1/236



These torque values are reference only. Heat radiation conditions and temperature rise effect by duty are different on each equipment, therefore please select motors after considering the heat conditions in the actual equipment.

Dimensions



The dimensions shown are for reference purpose and can be modified to your requirements.
Contact our Engineering Department for details.



PM Motor
PG Type

Applications

Home electric appliances : Air-conditioners

OA Equipment : Printers / Photocopiers

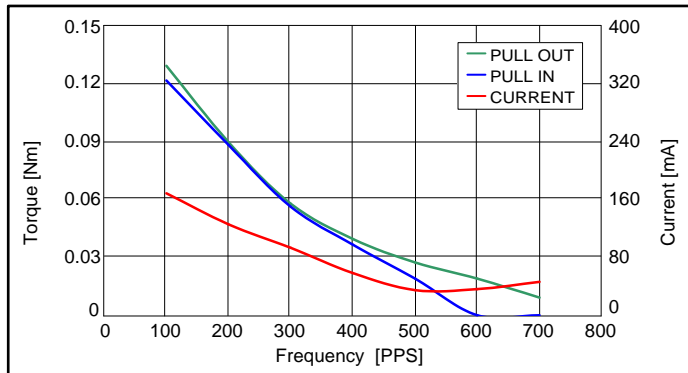
Power Tools : Drills / Drivers

Reference Characteristics

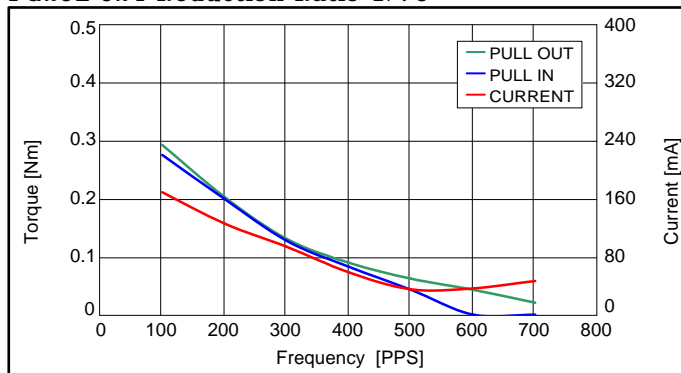
Motor Size	PG25L-024	
Reduction Ratio	1/30.3	1/76
Drive Characteristics	UNIPOLAR CONST. VOLT.	
Drive Voltage	12[V]	
Drive Method	2-2 PHASE	
Step Angle (2phase drive)	0.495°	0.197°
DC Resistance	110[Ω]	
Insulation Resistance	100M[Ω] MIN	
Dielectric Strength	AC 500[V] 1[min]	
Class of Insulation	CLASS B	
Operating Temp.	-10[°C] ~ 50[°C]	
Storage Temp.	-30[°C] ~ 80[°C]	
Operating Hum.	20[%] RH ~ 90[%] RH	

Torque Characteristics

PG25L-024 Reduction Ratio 1/30.3

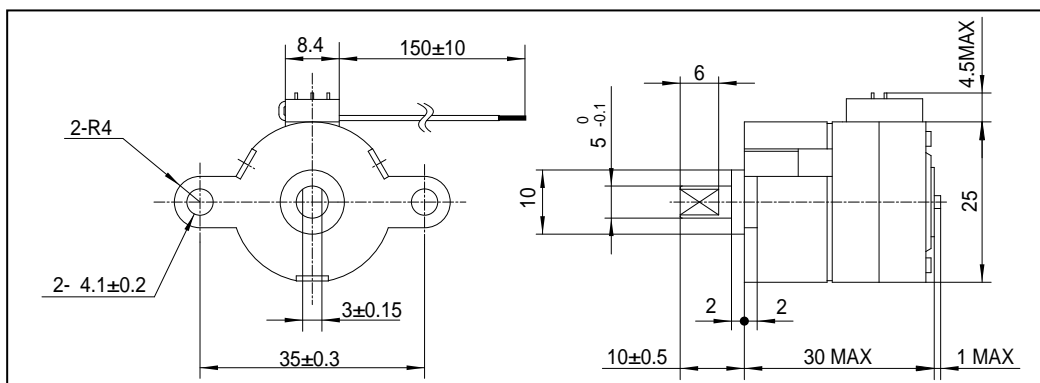


PG25L-024 Reduction Ratio 1/76

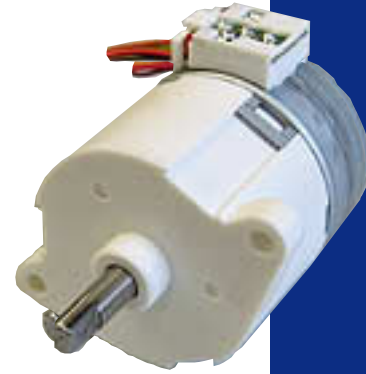


These torque values are reference only. Heat radiation conditions and temperature rise effect by duty are different on each equipment, therefore please select motors after considering the heat conditions in the actual equipment.

Dimensions



The dimensions shown are for reference purpose and can be modified to your requirements. Contact our Engineering Department for details.


 PM Motor
 PG Type

Applications

Home electric appliances : Air-conditioners

OA Equipment : Printers / Photocopiers

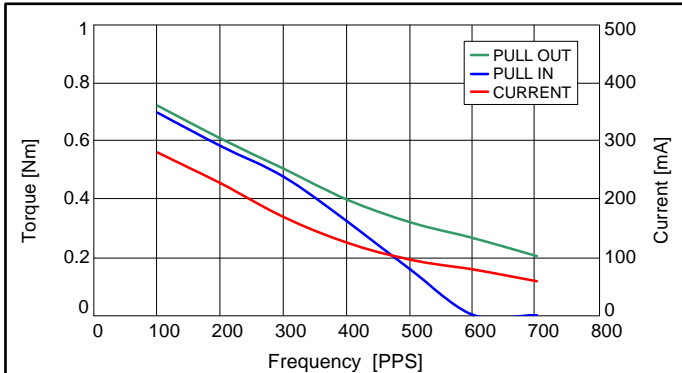
Power Tools : Drills / Drivers

Reference Characteristics

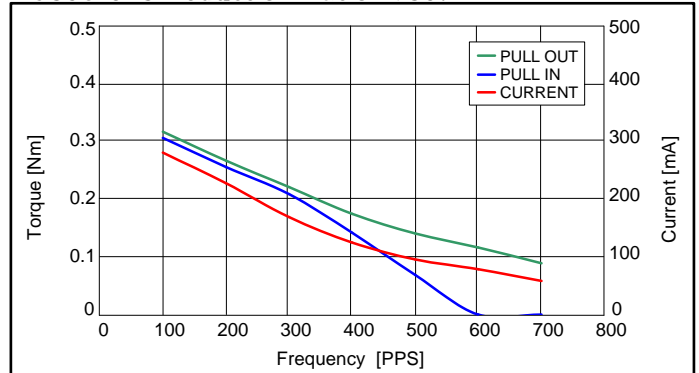
Motor Size	PG35S-048		
Reduction Ratio	1/35.4	1/89.8	1/280.5
Drive Characteristics	UNIPOLAR CONST. VOLT.		
Drive Voltage	12[V]		
Drive Method	2-2 PHASE		
Step Angle (2phase drive)	0.2118°	0.0835°	0.0267°
DC Resistance	70[Ω]		
Insulation Resistance	100M[Ω] MIN		
Dielectric Strength	AC 500[V] 1[min]		
Class of Insulation	CLASS B		
Operating Temp.	-10[°C] ~ 50[°C]		
Storage Temp.	-30[°C] ~ 80[°C]		
Operating Hum.	20[%] RH ~ 90[%] RH		

Torque Characteristics

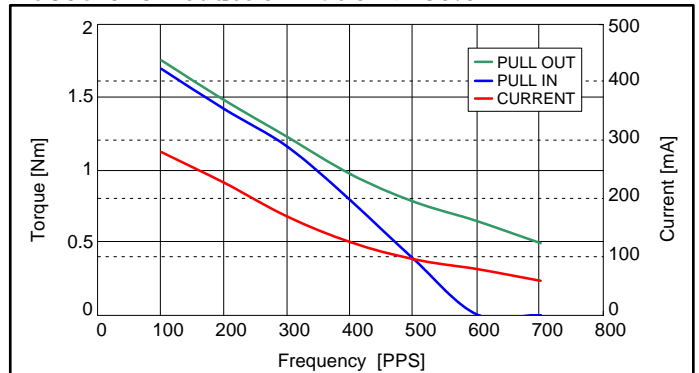
PG35S-048 Reduction Ratio 1/89.8



PG35S-048 Reduction Ratio 1/35.4

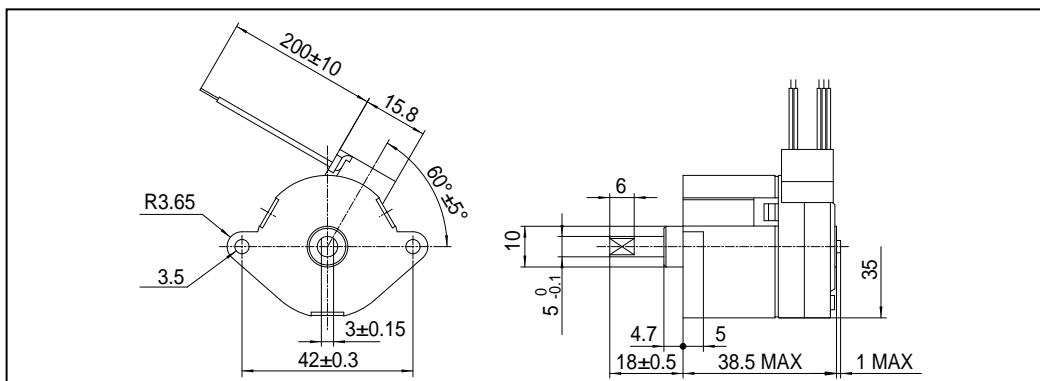


PG35S-048 Reduction Ratio 1/280.5

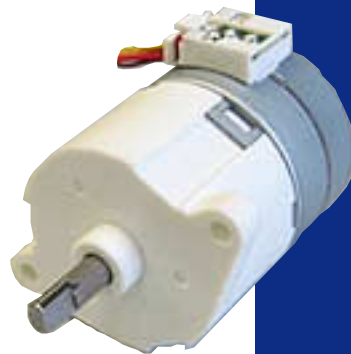


These torque values are reference only. Heat radiation conditions and temperature rise effect by duty are different on each equipment, therefore please select motors after considering the heat conditions in the actual equipment.

Dimensions



The dimensions shown are for reference purpose and can be modified to your requirements. Contact our Engineering Department for details.



PM Motor
PG Type

Applications

Home electric appliances : Air-conditioners

OA Equipment : Printers / Photocopiers

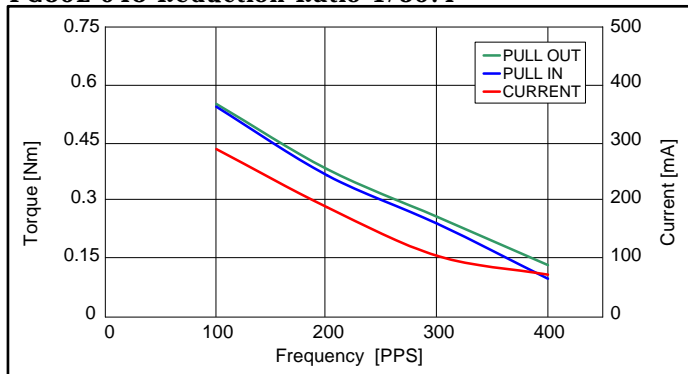
Power Tools : Drills / Drivers

Reference Characteristics

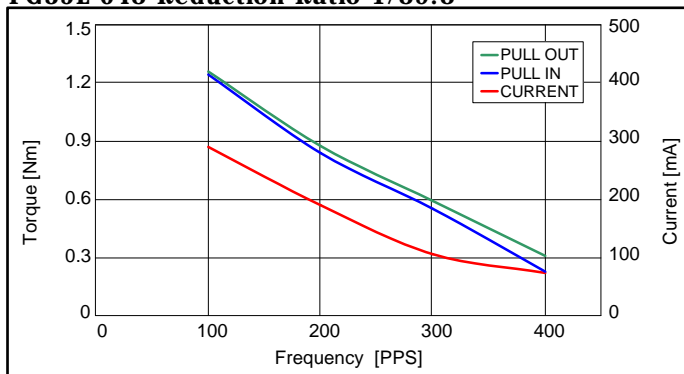
Motor Size	PG35L-048	
Reduction Ratio	1/35.4	1/89.8
Drive Characteristics	UNIPOLAR CONST. VOLT.	
Drive Voltage	12[V]	
Drive Method	2-2 PHASE	
Step Angle (2phase drive)	0.2118°	0.0835°
DC Resistance	70[Ω]	
Insulation Resistance	100M[Ω] MIN	
Dielectric Strength	AC 500[V] 1[min]	
Class of Insulation	CLASS B	
Operating Temp.	-10[°C] ~ 50[°C]	
Storage Temp.	-30[°C] ~ 80[°C]	
Operating Hum.	20[%] RH ~ 90[%] RH	

Torque Characteristics

PG35L-048 Reduction Ratio 1/35.4

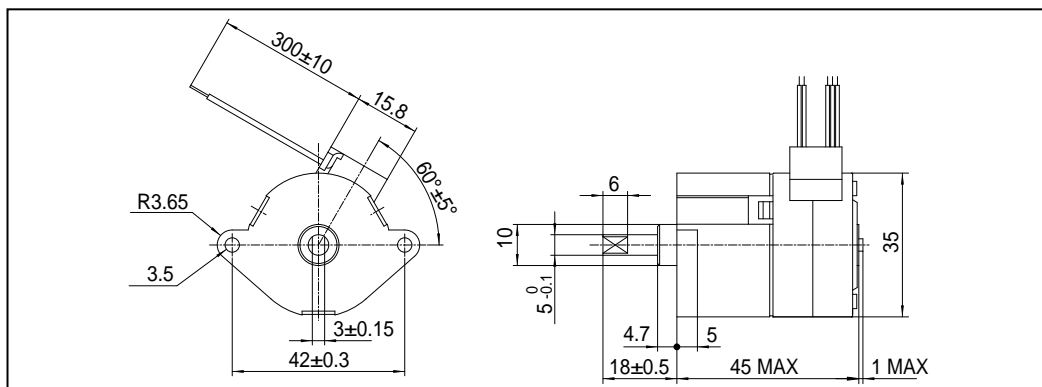


PG35L-048 Reduction Ratio 1/89.8



These torque values are reference only. Heat radiation conditions and temperature rise effect by duty are different on each equipment, therefore please select motors after considering the heat conditions in the actual equipment.

Dimensions



The dimensions shown are for reference purpose and can be modified to your requirements. Contact our Engineering Department for details.