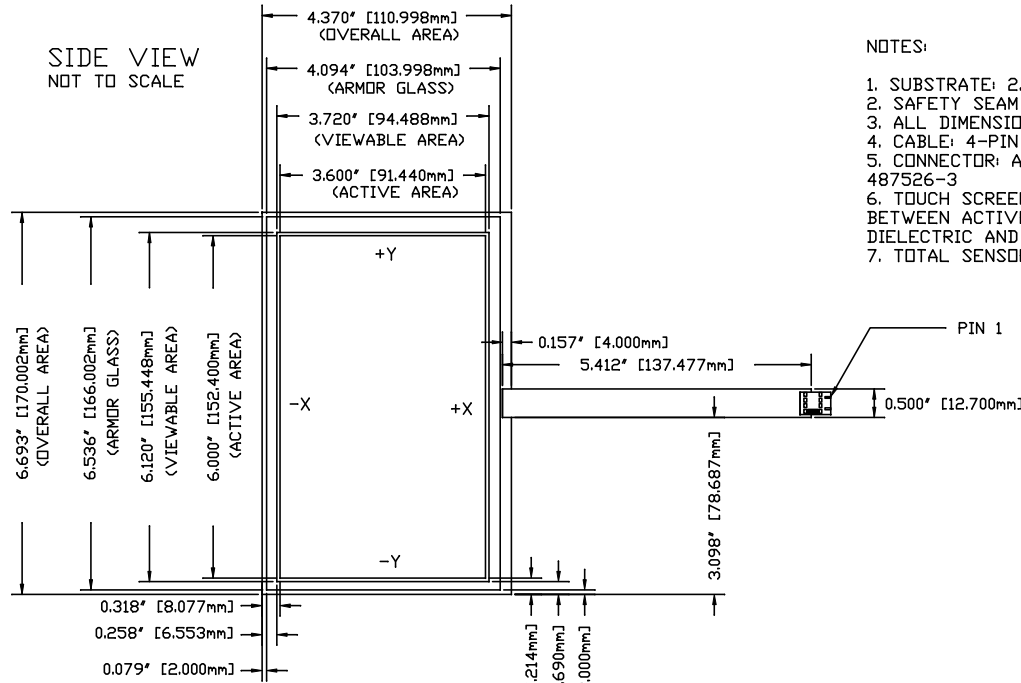


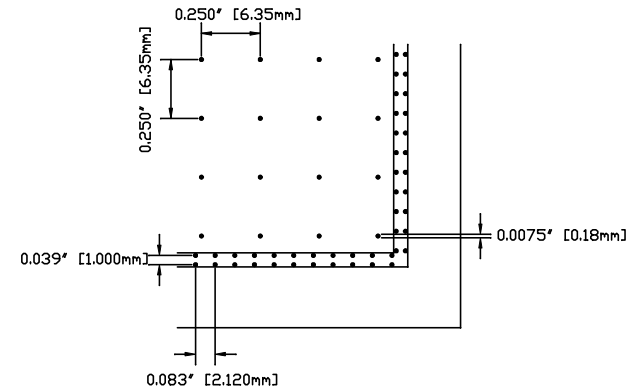
REVISIONS			
LET	DESCRIPTION	DATE	BY
A	INITIAL RELEASE	01-16-08	DZ
B	CONNECTION ORIENTATION CHANGED	01-16-08	DZ
C	CONNECTOR PART NUMBER ADDED	01-24-08	DZ
D	FILM COATING SPECIFIED	01-31-08	DZ
E	PINDUT INFORMATION ADDED	02-06-08	DZ
F	UPDATE DRAWING INFORMATION	07-03-09	DZ



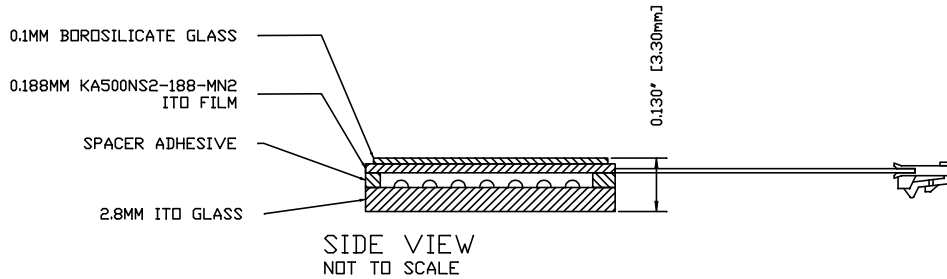
NOTES:

1. SUBSTRATE: 2.8MM ITO GLASS
2. SAFETY SEAM ON ALL EDGES
3. ALL DIMENSIONS IN INCHES [MILLIMETERS]
4. CABLE: 4-PIN FPC TYPE
5. CONNECTOR: AMP TYPE WITH 0.1' [2.54MM] CENTERS, LATCHING, PART NUMBER 487526-3
6. TOUCH SCREEN TO BE ACTIVATED WITHIN ACTIVE AREA ONLY. AREA BETWEEN ACTIVE AND VIEWABLE AREAS MUST HAVE A SCREENED ON DIELECTRIC AND CONDENSED DOTS.
7. TOTAL SENSOR THICKNESS: 0.130' [3.30MM] APPROXIMATE

PIN	DESC
1	-X
2	+Y
3	+X
4	-Y



DETAIL A - DOT SPEC
SCALE 5:1



		A 3 METRO - 1818 PARRISSE ST - OTTAWA, ONTARIO	
AD7.0ULTRA			
DRAWN BY: DZ DATE: 07-03-09 PROJECT NAME:	PROJECT NUMBER:	SHEET NUMBER: 1 SHEETS TOTAL: 1	SCALE:
TOLERANCING UNLESS OTHERWISE SPECIFIED DIM: ASB ANGLES: ASD		PART NUMBER: AD-7.0-4RU-TR-100	

DO NOT SCALE DRAWING