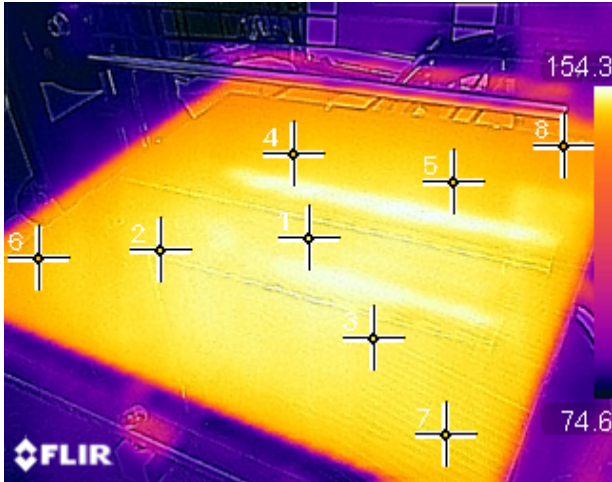


3D printer Bed

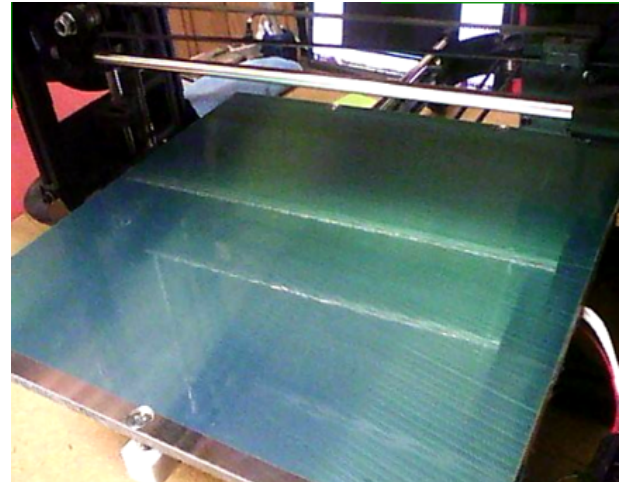
IMG_4108.JPG

4/26/16, 9:24 PM



IMG_4108.JPG

4/26/16, 9:24 PM



MEASUREMENTS (°F)

Spot 1	151.7
Spot 2	150.8
Spot 3	151.3
Spot 4	148.8
Spot 5	149.4
Spot 6	147.3
Spot 7	149.9
Spot 8	144.5
Spot1Temp.-Spot2Temp.	0.8

PARAMETERS

Emissivity	0.95
Refl. temp.	68.0 °F
Distance	3.28 ft
Relative humidity	50 %
Atmospheric temperature	68.0 °F
Transmission	0.94