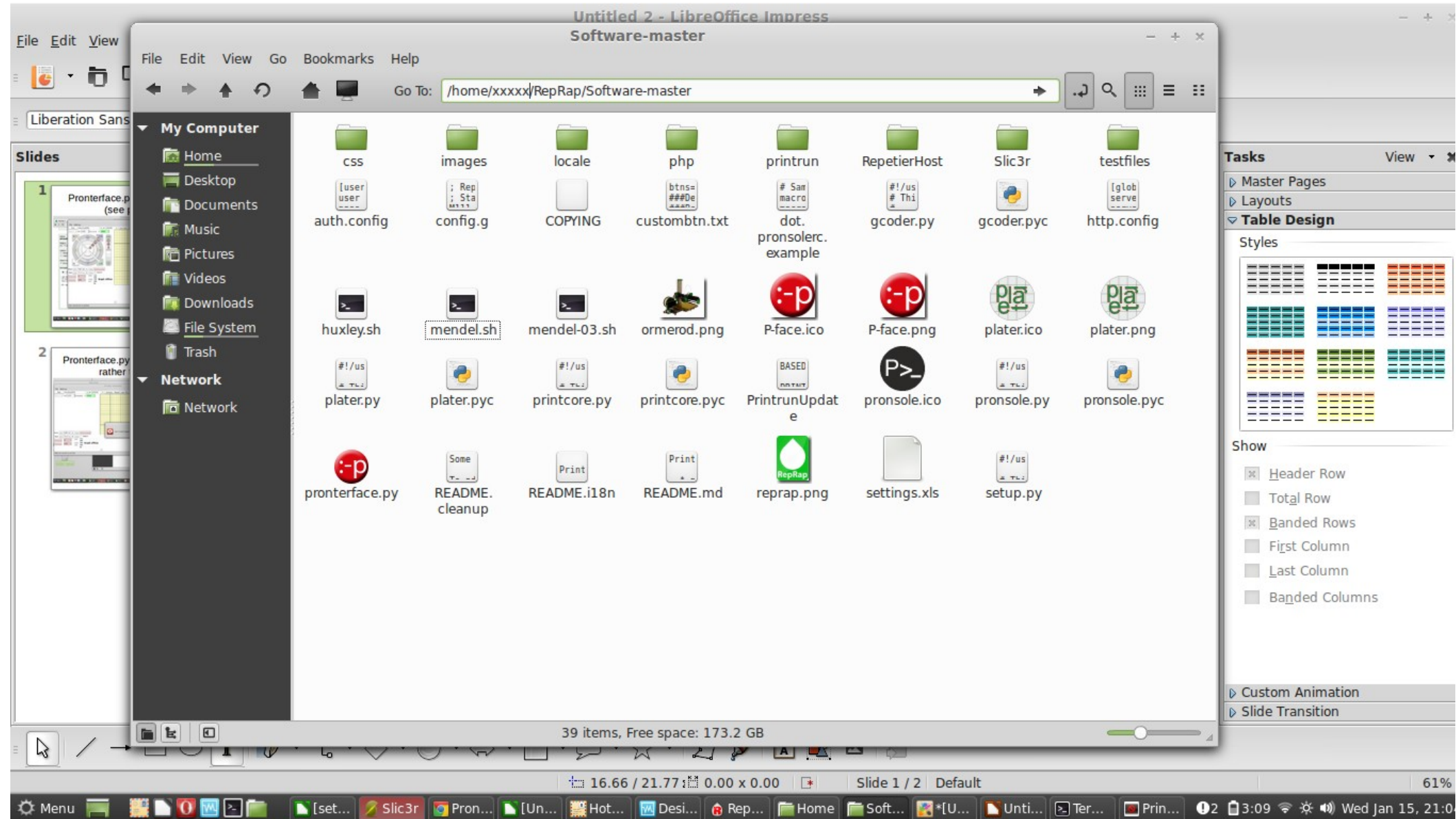


What you should have in folder where you unzipped printrun/pronterface



Pronterface.py started from folder (see previous pic)

The screenshot shows the Pronterface for Ubuntu web application running in a Google Chrome browser window. The interface is titled "Printer Interface" and includes a menu bar with "File" and "Settings".

Key interface elements include:

- Port:** /dev/ttyACM1 @ 115200
- Buttons:** Connect, Reset, Load file, Compose, SD, Print, Pause, Recover
- Motors off:** XY: 1000 mm/min Z: 1000
- Control Pad:** A circular pad with directional arrows for X (+X, -X), Y (+y, -y), and Z (+z, -z) axes, along with a home button.
- Temperature Controls:** Heat: Off 185 (pl) Set Check temp; Bed: Off 75.0 (u) Set Watch
- Extruder Controls:** Extrude: 5 mm; Reverse: 100 mm/min
- Status:** Graph offline
- Footer:** Not connected to printer.

The browser's address bar shows "Pronterface for Ubuntu - Google Chrome". The system tray at the bottom of the screen displays various application icons and the system clock showing "Wed Jan 15, 21:0".

Pronterface.py started from with link rather than launcher

