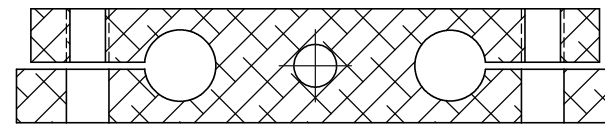
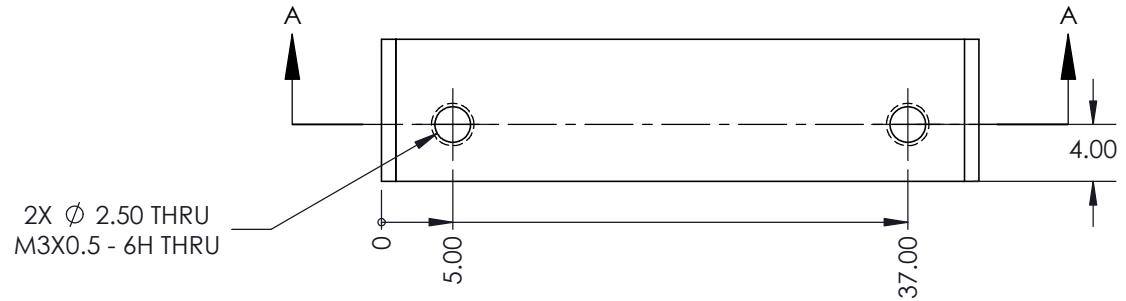
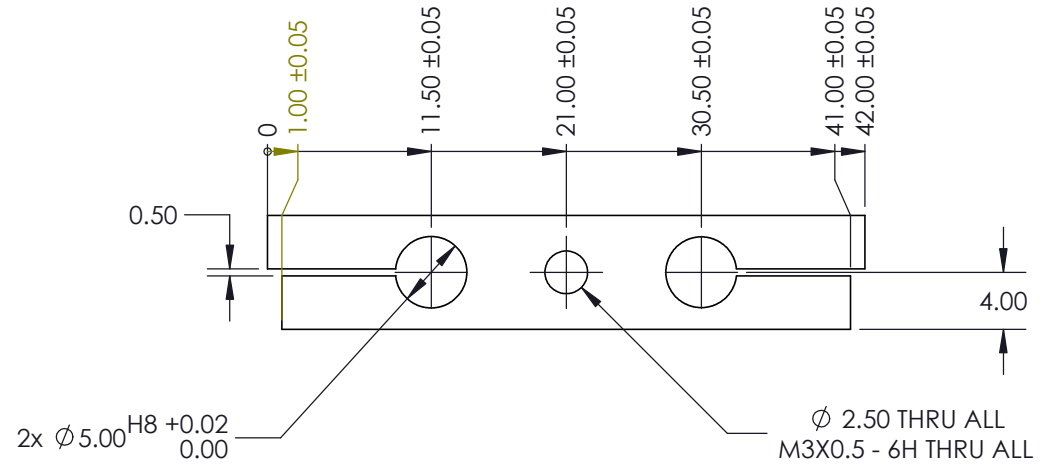
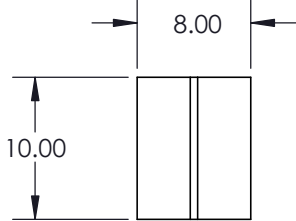


NOTES:

1. MATERIAL: ALUMINIUM
2. FINISH: CLEAN  
ALL DIMENSIONS APPLY AFTER FINISH.
3. MATERIAL AND FINISH MUST COMPLY WITH  
CURRENT ROHS LEGISLATION.
4. BREAK ALL SHARPS.



SECTION A-A 2x Ø 3.00

REVISIONS

REV.	DESCRIPTION	DATE
4	REMOVED M3 THREADS ON ONE SIDE OF CLAMP	03/10/14
5	ADDED MISSING DIMENSIONS FOR M3 HOLES	16/10/14
00-000		27/11/2014

MASS: SEE NOTES	DIMENSIONS ARE IN MILLIMETERS	
MATERIAL: SEE NOTES	STD TOLERANCES: X±0.1 X.X±0.1 X.XX±0.10 ANGLES: ±0.5°	
FINISH: SEE NOTES	ENG.: R. JONES	15/10/14
	DRAFT: R. JONES	15/10/14
	APPR.: R. JONES	15/10/14

	<b>RepRap Pro</b>	
	PROJECT: DUAL HOT END	
DUAL COLOUR COOLING BLOCK		
SIZE: <b>A4</b>	DWG NO.: <b>736</b>	REV: <b>00-000</b>
SCALE: 2:1		SHEET 1 OF 1