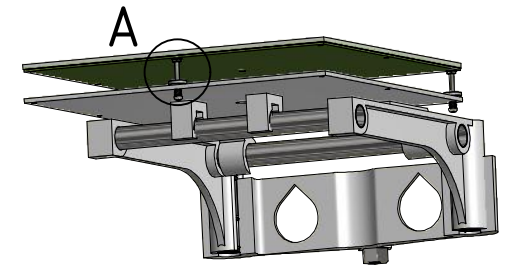
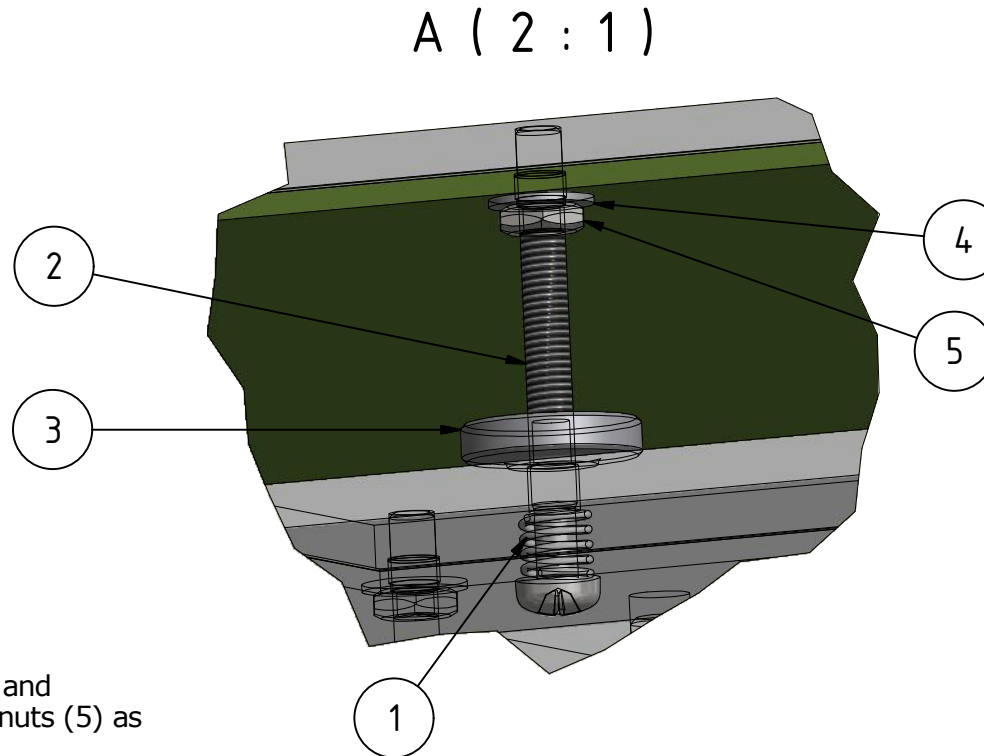


## Platform adjustment



To adjust the platform-height and -alignment, twist the knurled nuts (5) as required.

The M3 nut (4) fastens the M3 bolt (2) to the top-platform. The knurled nut (5) adjusts the distance between bottom- and top-platform.

The spring (1) forces the top platform down to the minimum distance allowed by the knurled nut.

If you need more variability, just use a longer bolt and a longer spring. M4 will work as well but you'll need to extend the holes and threads in the top-platform to M4 too.

BOM			
Part	Qty	Partname	Description
1	3	adjustment spring M3x4mm	
2	3	ISO 7045 - M3 x 30 - 4.8 - H	M3 nut
3	3	DIN 467 - M3	knurled nut M3
4	3	DIN 125 - A 3,2	M3 washer
5	3	ISO 4035 - M3	M3 nut