

1 2 3 4 5 6

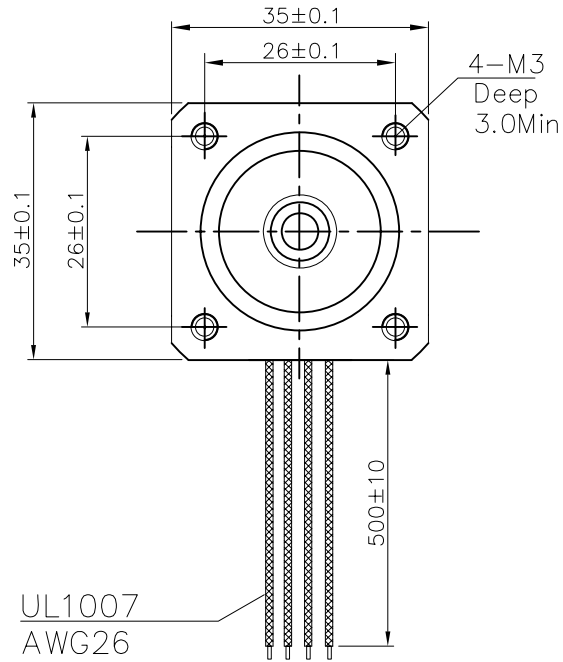
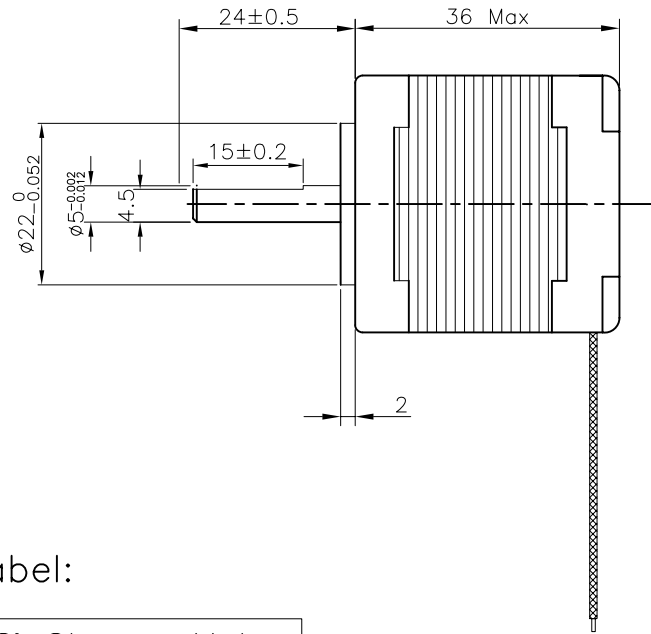
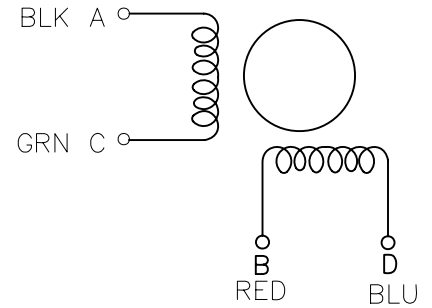


DIAGRAM (Bipolar)



Label:

1.8° Stepper Motor
LDO-35STH36-1004A
120530 LDO MOTORS
CE

Items	Specs	Items	Specs						
Phase Number	2 phases	Step Angle	1.8° ± 5%						
Rated Voltage	2.7VDC	Rated Current	DC 1.0A / Phase	Pre	---	New Release	Danny Z	J. B.	05.30.12
Resistance(20°C)	27 ± 15% Ω / phase	Inductance	4.3 ± 20% mH / Phase	REV	ECN NO	Description	Made by	Approve	Date
Holding Torque	≥ 1.4Kg.cm	Detent Torque	100g.cm REF.				LDO MOTORS CO.,LTD Stepper Motor LDO-35STH36-1004A(GCU)		
Rotate Direction	ACBDA CW	MAX Starting PPS	≥ 1500 PPS	Scale					
MAX slewing PPS	≥ 2000 PPS	Insulation Resistance	≥ 100 MΩ (DC 500V)						
HI POT	AC600V/1mA/1S	Insulation Class	Class B						
Rotor Inertia	14 g.cm ²	Weigth	0.18 Kg REF.	Des.	Check	Appr.	Date	REV	Draw NO
									page

1 2 3 4 5 6

A

A

B

B

C

C

D

D